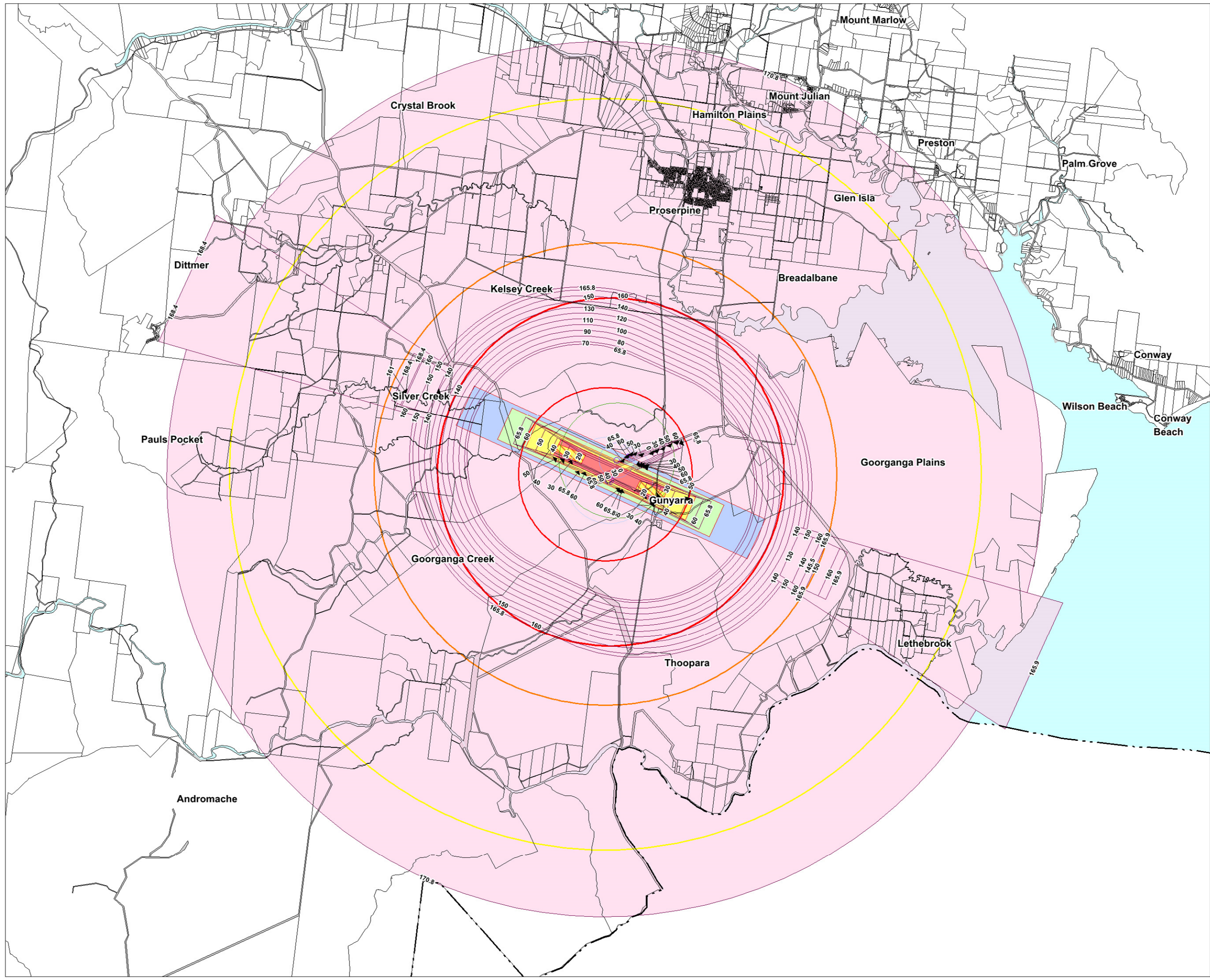




WRC Planning Scheme Airport environs overlay



Legend

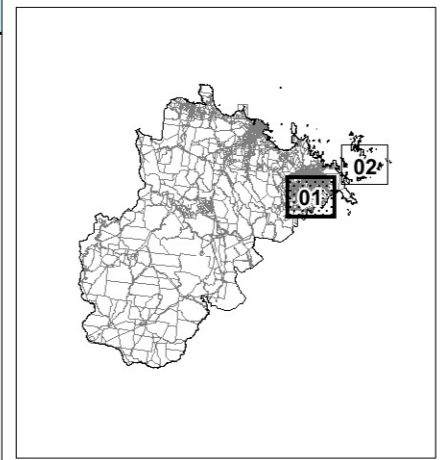
- Public safety area
- Obstacle Limitation Surface
- Obstacle Limitation Surface contours
- Aviation facility**
- Zone A
- Zone A/B
- Area of interest
- Bird and bat strike zone**
- Distance from airport - 3km
- Distance from airport - 8km
- Distance from airport - 13km
- Light intensity**
- Zone A - 0 Candela - 600m wide 1000m from runway strip
- Zone B - 50 Candela - 900m wide 2000m from runway strip
- Zone C - 150 Candela - 1200m wide 3000m from runway strip
- Zone D - 450 Candela - 1500m wide 4500m from runway strip
- Within 6km - Max intensity of light sources 3deg above horizon
- General information**
- Local government boundary
- DCDB parcel boundary
- Road reserve
- Waterbody

This data set is an extract from Queensland's digital cadastral Database. Use of this data set in any approved with the written permission of the Director General, Department of Natural Resources and Mines, 2014. 61 Merry Street, Brisbane, 4000, Queensland, Australia © The State of Queensland (Dept. of Natural Resources and Mines, 2014. No Liability accepted for any loss or damage that may arise from the use of or reliance on this data.

Whitsunday Coast Airport

Date: 18/04/2017

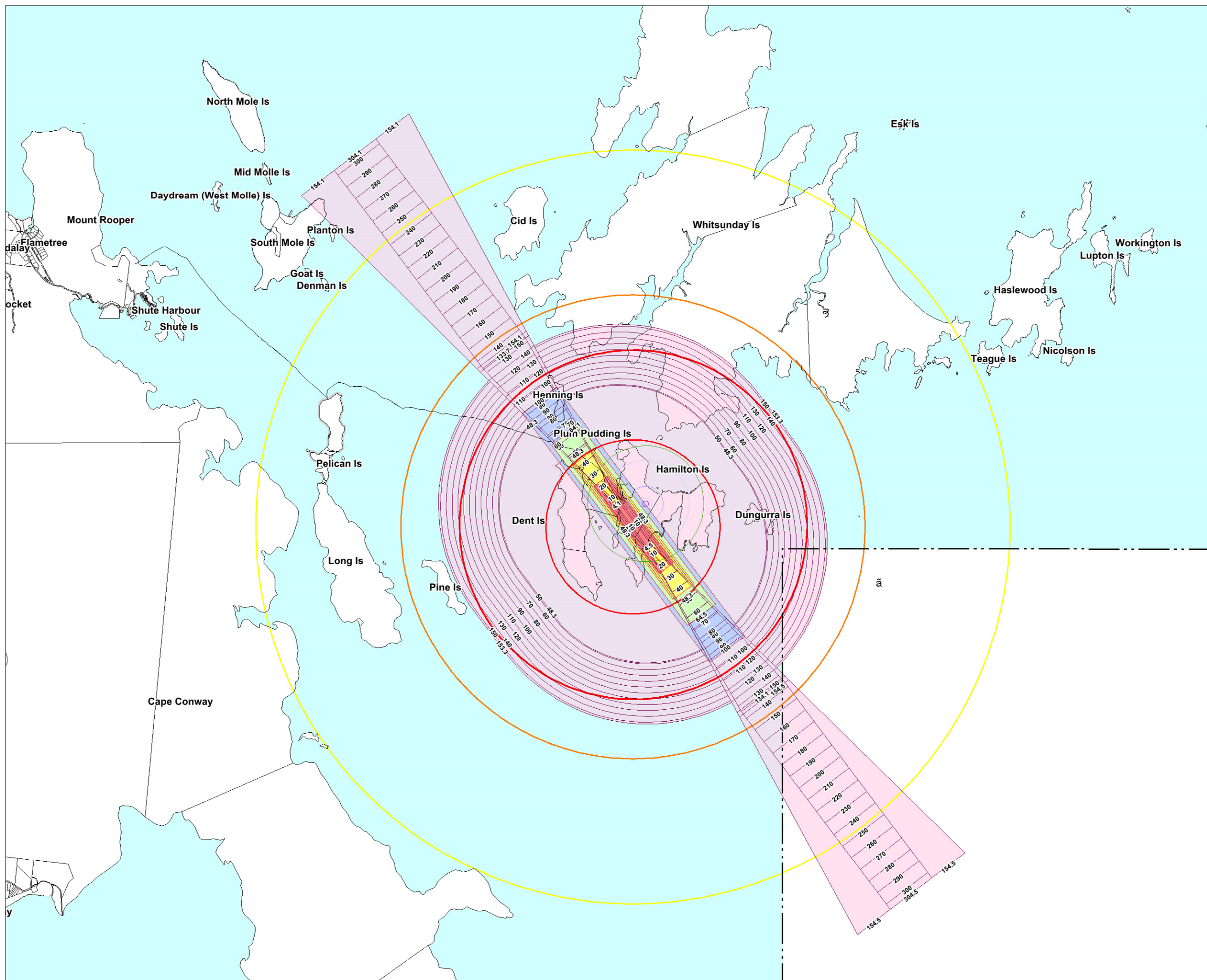
Approx Scale @ A3: 1: 120 000



Overlay Map - AE - 01



WRC Planning Scheme Airport environs overlay



Legend

- Public safety area
- Obstacle Limitation Surface
- Obstacle Limitation Surface contours

Aviation facility

- Zone A
- Zone A/B
- Area of interest

Bird and bat strike zone

- Distance from airport - 3km
- Distance from airport - 8km
- Distance from airport - 13km

Light intensity

- Zone A - 0 Candela - 600m wide 1000m from runway strip
- Zone B - 50 Candela - 900m wide 2000m from runway strip
- Zone C - 150 Candela - 1200m wide 3000m from runway strip
- Zone D - 450 Candela - 1500m wide 4500m from runway strip
- Within 6km - Max intensity of light sources 3deg above horizon

General information

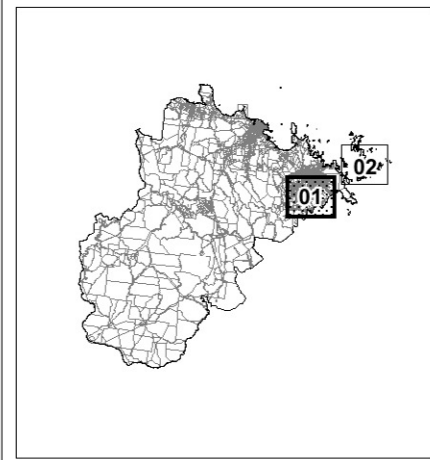
- Local government boundary
- DCDB parcel boundary
- Road reserve
- Waterbody

This data set is an extract from Queensland's digital cadastral Database. Use of this data set may be approved with the written permission of the Director General, Department of Natural Resources and Mines, 2014, 61 Merry Street, Brisbane, 4000, Queensland, Australia © The State of Queensland (Dept. of Natural Resources and Mines, 2014. No Liability accepted for any loss or damage that may arise from the use of or reliance on this data.

Hamilton Island Airport

Date: 18/04/2017

Approx Scale @ A3: 1: 120 000



Overlay Map - AE - 02



**WRC Planning Scheme
Airport environs
overlay**

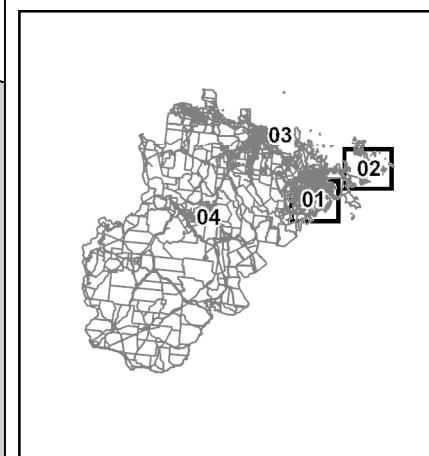
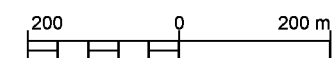
- Aviation facility**
- Zone A
 - Zone A/B
 - Area of interest
- General information**
- Local government boundary
 - DCDB parcel boundary
 - Road reserve
 - Waterbody

This data set is an extract from Queensland's digital cadastral Database. Use of this data set may be approved with the written Permission of the Director General, Department of Natural Resources and Mines, 2014, 51 Merry Street, Brisbane, 4000, Queensland, Australia © The State of Queensland (Dept. of Natural Resources and Mines, 2014. No Liability accepted for any loss or damage that may arise from the use of Or reliance of this data.

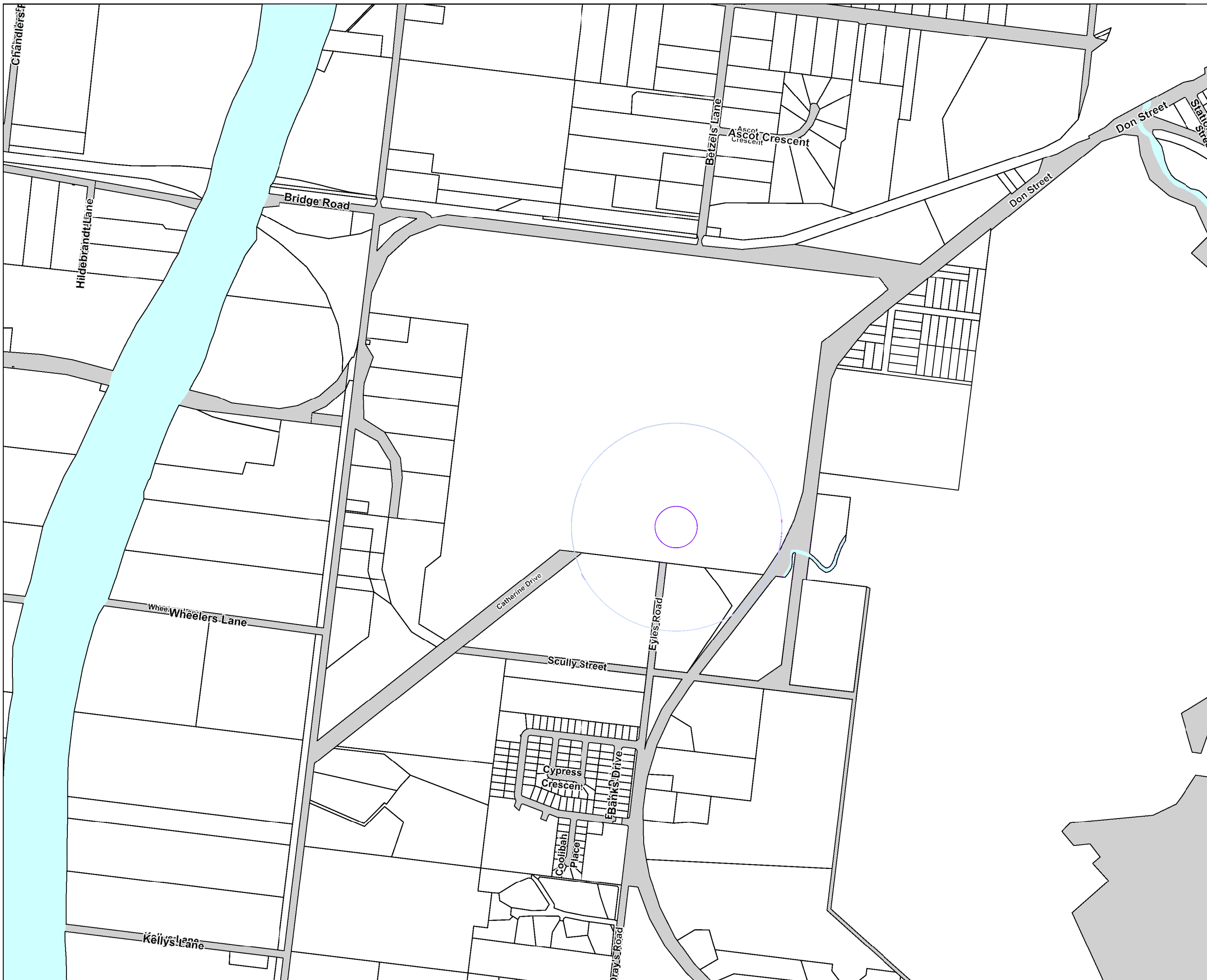
Date: 13/06/2016



Approx Scale @ A3: 1: 10,000



Overlay Map - AO - 03





**WRC Planning Scheme
Airport environs
overlay**

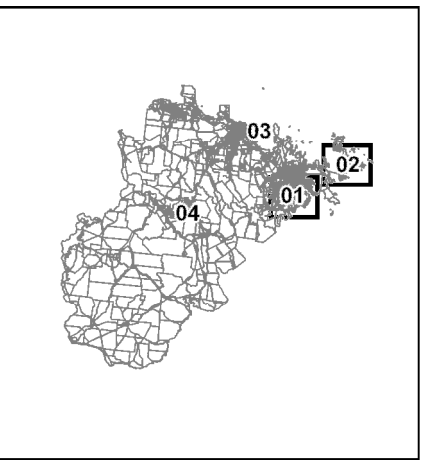
- Aviation facility**
- Zone A
 - Zone A/B
 - Area of interest
- General information**
- Local government boundary
 - DCDB parcel boundary
 - Road reserve
 - Waterbody



This data set is an extract from Queensland's digital cadastral Database. Use of this data set may be approved with the written Permission of the Director General, Department of Natural Resources and Mines, 2/14, 5/1 Mary Street, Brisbane, QLD, Queensland, Australia. © The State of Queensland (Dept. of Natural Resources and Mines), 2014. No Liability accepted for any loss or damage that may arise from the use of or reliance on this data.

Date: 13/06/2016

Approx Scale @ A3: 1: 20,000



Overlay Map - AO - 04