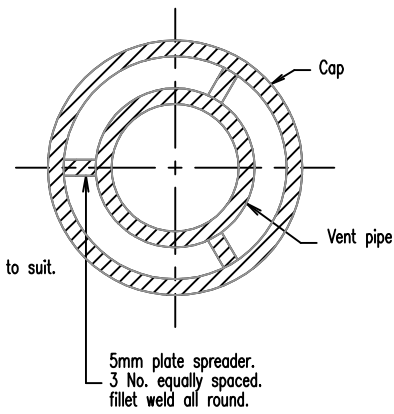
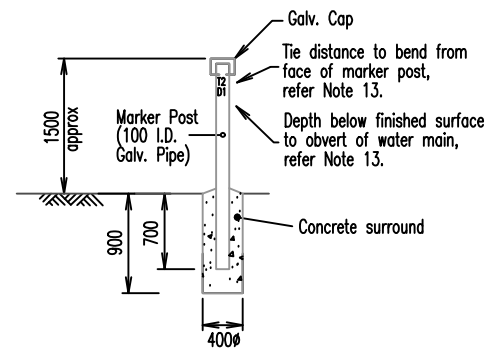


200 x 200 x 100 open graded gravel. Alternatively provide a pipe outlet, refer project drawings

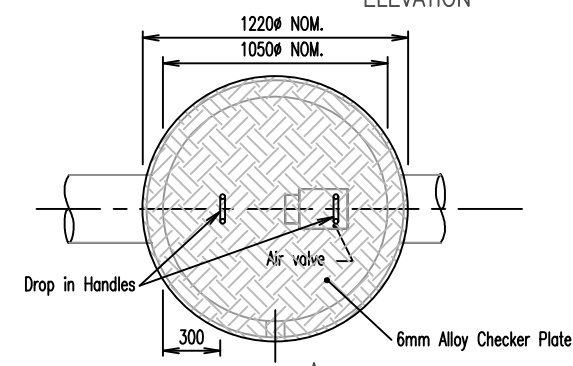
ELEVATION



SECTION B-B

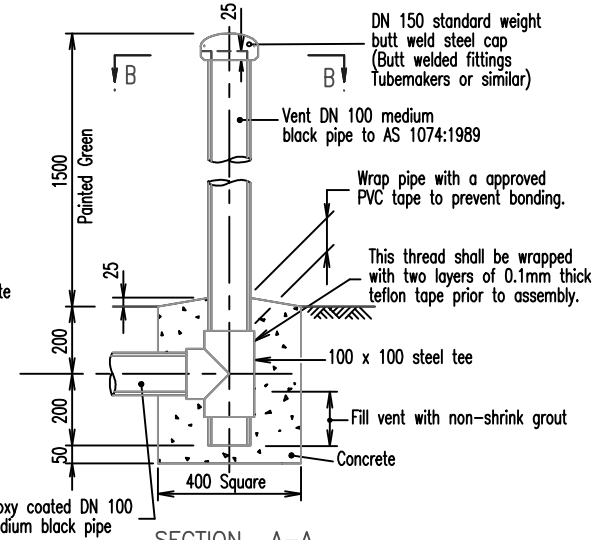


ELEVATION
WATER MAIN MARKER DETAIL



400 x 400 concrete block. refer vent pipe details

PLAN
VALVE PIT



SECTION A-A
VENT PIPE DETAILS

If specified in project documentation

NOTES:

- Approved 50mm and 80mm Air Valves, fitted with 80mm butterfly valves for isolation purposes. The installation shall be such that the air valve can be removed while the butterfly valve remains in place.
- 50mm Air Valves shall be supplied with adaptor flange suitable for connection to the 80mm DI CL riser.
- The full length of the DI CL riser pipe including underground flanges shall be epoxy coated or wrapped with 'Denso' protective coating applied in accordance with the manufacturer's instructions:
 - Denso 360 primer to clean metal;
 - Wrap of cold applied Denso 760 tape;
 - Wrap of Denso 931 self adhesive PVC tape.
- Water mains 250mm and smaller:—
Walls of pit to extend below pipe, provide 200mm space between water main and floor of pit.
- Concrete N25 in accordance with AS 1379 and AS 3600.
- Reinforcement fabric to AS 4671.
- Provide a fine non-slip surface with a wood float to the top surface of all walls.
- Refer project drawing for Vent pipe location. Vent steelwork shall be painted with System Reference LP2-A to AS/NZS 2312.
- Compacted sand backfill shall be brought up to the underside of the air valve pit.
- Air valves shall be placed on the high point of all trunk mains.
- All flanges shall be in accordance with AS 2129 - Table C unless noted otherwise on project drawings.
- Position markers at changes of direction and all fence lines.
- Lettering on side of marker shall be positioned directly on line between marker and water main bend. All lettering shall be painted yellow and shall be minimum 30 high x 20 wide.
- All dimensions in millimetres.

REVISIONS	DATE
E DEVELOPMENT MANUAL UPDATES AND AMENDMENTS 2018	26/10/18
D GENERAL UPDATES AND STANDARD REFERENCING AMENDMENTS	27/4/16
C GENERAL UPDATES	15/3/12
B MINOR CHANGES TO ELEVATION DETAIL	24/8/10
A ORIGINAL ISSUE	1/3/97



Email: info@whitsundayrc.qld.gov.au Web: www.whitsundayrc.qld.gov.au

BOWEN
67 Herbert St
Bowen 4805 Q
Ph 07 4761 3600

COLLINSVILLE
Cnr Stanley & Conway Sts
Collinsville 4804 Q
Ph 07 4785 5366

PROSERPINE
83-85 Main St
Proserpine 4800 Q
Ph 07 4945 0200

AIR VALVE PIT
Ø50 AND Ø80 AIR VALVES

WATER
Standard
Drawing
W-0010
A B C D E