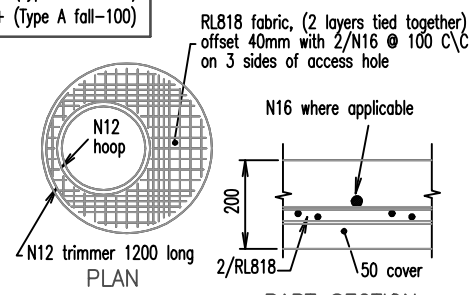


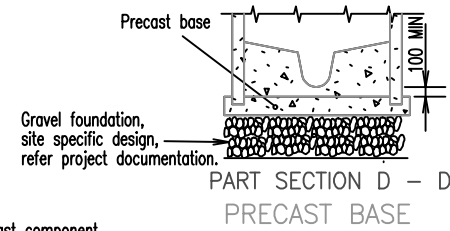
PIPE SIZE	INLET DROP - DEPTH RANGE					
	V C PIPE			uPVC PIPE		
	TYPE A	TYPE B	TYPES C&D	TYPE A	TYPE B	TYPES C & D
Ø150	40 to 300	300 to 600	over 350	40 to 300	300 to 600	over 600
Ø225	40 to 300	500 to 800	over 550	40 to 300	500 to 1000	over 1000
Ø300	40 to 300	600 to 900	over 700	40 to 300	600 to 1500	over 1500
Ø375	40 to 300	700 to 1000	over 900	40 to 300	1000 to 2100	over 2100

MINIMUM DEPTHS	
Outlet Pipe Size	Minimum Depth to Outlet Invert
Ø150	1200 + (Type A fall-100)
Ø225	1275 + (Type A fall-100)
Ø300	1350 + (Type A fall-100)
Ø375	1425 + (Type A fall-100)

CRITICAL DIMENSIONS		
Depth to outlet invert	Thickness	
	a	b
Minimum to 3000	150	150
3000 to 6000	225	300



PART SECTION
 CONVERTER SLAB



NOTES

- Minimum fall through chambers shall be 40mm.
- Concrete shall be
 - Class N32 for in-situ concrete
 - Class N40 for pre-cast segments both in accordance with AS 1379 and AS 3600.
- All fasteners shall be Grade AS 1444 stainless steel. Unless otherwise noted, fasteners shall be as described below.
 - Fixing to concrete - bolts shall be approved anchors.
 - Fixing to metalwork - bolts shall be HEX head bolts.
- Nylon or polythene separation inserts shall be used between stainless steel fasteners and aluminium sections.
- Anti-galling lubricant "Loctite 222 or 567" or similar shall be used on all threads and between all stainless steel abutting surfaces
- Aluminium surfaces in contact with concrete shall be painted with two coats of alkali resistant bituminous paint.
- uPVC or GRP pipes cast into walls shall be coated or sanded for the length of wall penetration to ensure bonding.
- Precast chambers shall not be used where they:-
 - act as a discharge chamber for pumped flows or are within 100 metres of a pumped flow discharge point (unless approved by Council with a fully lined HDPE/PVC interior)
 - connect sewer lines greater than Ø375
 - chambers are greater than 6.0m in depth
- Alternative converter slab designed to Austroads W7 wheel load, dynamic factor 0.4. Precast converter slabs must be designed to same standards.
- All dimensions in millimetres.

LEGEND

- Length of short pipe shall be 2 x DIA of pipe
- Lubricate concrete surface and rubber ring before placing precast components
- * Refer DETAIL 'A' Dwg S-0020

REVISIONS	DATE
D DEVELOPMENT MANUAL UPDATES AND AMENDMENTS 2018	26/10/18
C GENERAL UPDATES AND STANDARD REFERENCING AMENDMENTS	6/5/16
B MINOR AMMENDMENTS	10/3/98
A ORIGINAL ISSUE	1/3/97



Email: info@whitsundayrc.qld.gov.au Web: www.whitsundayrc.qld.gov.au

BOWEN
 67 Herbert St
 Bowen 4805 Q
 Ph 07 4761 3600

COLLINSVILLE
 Cnr Stanley & Conway Sts
 Collinsville 4804 Q
 Ph 07 4785 5366

PROSERPINE
 83-85 Main St
 Proserpine 4800 Q
 Ph 07 4945 0200

ACCESS CHAMBERS
 1050mm NOM. DIA.
 PRECAST CONSTRUCTION

SEWERAGE
 Standard
 Drawing
 S-0021

A B C D