

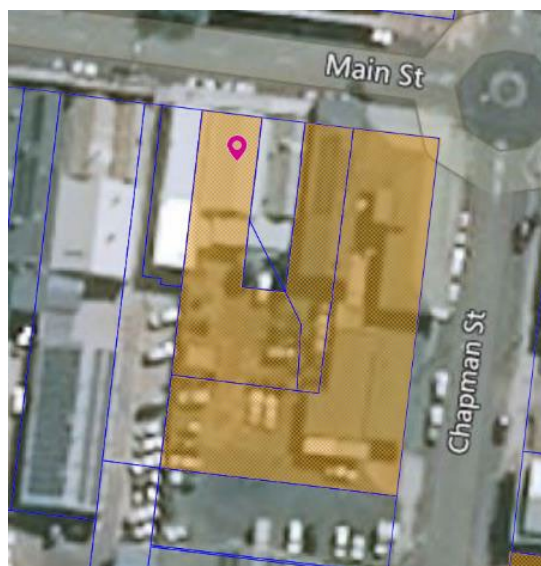
FOXLEE BUILDING

Address	70 Main Street, Proserpine
Lot Plan	2RP717184
Coordinates	148.582764, -20.401985
Integrity	Fair
Condition	Fair
Statutory Listings	Nil
Non-Statutory Listings	Nil
References	David Scobie Architects, 2005. Proserpine Main Street Study & Datasheets. Townsville Daily Bulletin, Wednesday 19 October 1949, p.1. Townsville Daily Bulletin, Saturday 30 June 1951, p.2.

Street View



Location Map



Physical Description

The Foxlee building is located on the southern side of Proserpine's main commercial precinct, Main Street. It is a single storey, double fronted reinforced concrete building with a cantilevered awning and an art deco-style stepped parapet.

The parapet contains the lettering 'FOXLEE BUILDING.'

The original shop has been divided into two and the front wall, which was tiled, has since been plastered and painted over.

The windows and doors have been altered and currently comprise aluminium window framing and entrance doors to the west of each window.

Historical Context

The Proserpine district was first settled by European pastoralists in the 1870s. One property, Glen Isla, was set aside for a 3000-acre sugar plantation in 1882. Although land was cleared by Pacific Islander and Chinese labour, and machinery and a mill was ordered for crushing, the Crystal Brook Sugar Company Limited was not successful. The land was subdivided under the auspices of the Crown Lands Act 1884 which provided for the resumption of larger pastoral runs and conversion to small selections. In the 1890s, part of the Glen Isla property was included in the Proserpine township.

Proserpine township and district developed quickly after the establishment of the Proserpine Central Sugar Mill in 1897.

The mill, which was financed under the provisions of the Sugar Works Guarantee Act 1893, was located in the centre of town, with frontage on Main and Mill Streets. Cane was transported to the mill via a tramway and then transported to a wharf on the Proserpine River.

The present day Foxlee building was constructed after October 1949 as the result of a major fire in Proserpine which destroyed a number of the town's buildings. Prior to 1949, the site was occupied by a timber butcher's shop which was built in 1922. The butchery remained in operation during the 1930s and, in 1938, was bought by Herbert Foxlee. He had full ownership of the business in 1944 and obtained freehold in 1944.

Following the 1949 fire, the Foxlee building was rebuilt as a concrete and brick butchers' shop by Bob Shaw. Other local tradesmen assisted with the plumbing, roofing and brickmaking. The new shop included an automatic ammonia plant to run the cold room. The new building was opened on 5 October 1951.

Mr. Foxlee sold the building to Geoff Lascelles on 25 November 1957. With a variety of subsequent owners, including the Faust family, the building remained a butcher's shop until 1995. Since then, it has been divided into two shops.

Historical Significance

Criteria A - *the place is important in demonstrating the evolution or pattern of the region's history*

The Foxlee Building demonstrates the evolution and process of retail Place Category premises in Proserpine's commercial precinct during the late 1950s.

Criteria E - *the place is important because of its aesthetic significance*

The Foxlee Building's art deco-style stepped parapet, with decorative lettering, and cantilevered awning contributes to the overall aesthetics of Proserpine's Main Street commercial precinct.



Below: 8 August 2020

