

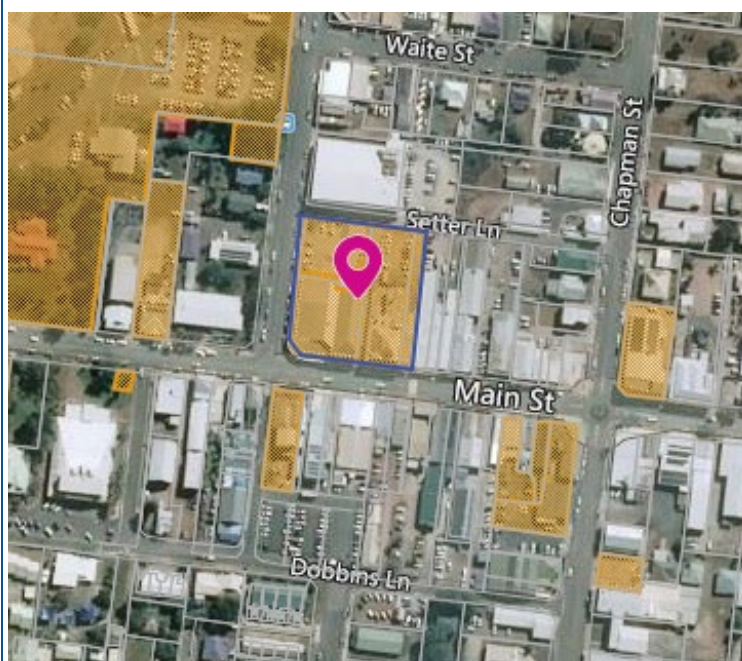
## FAUSTS STORE

<b>Address</b>	27 Main Street, Proserpine
<b>Lot Plan</b>	19SP241791, 20SP241791, ASP248724
<b>Coordinates</b>	E: 664365 N: 7743358
<b>Integrity</b>	Good
<b>Condition</b>	Good
<b>Statutory Listings</b>	Nil
<b>Non-Statutory Listings</b>	Nil
<b>References</b>	David Scobie Architects, 2005. Proserpine Main Street Study & Datasheets. Historical information from the Proserpine Historical Museum.

### Street View



### Location Map



### Physical Description

Faust's Store is a substantial department store located in a prominent position in Proserpine's commercial district on the corner of Mill and Main Streets.

The masonry building demonstrates 1950s architectural attributes, including the curved, stepped parapet, tiles and columns and geometric artwork and lettering 'Faust's' over the former corner main entrance area.

The tilework is still extant and visible along the western façade of the lower level of the building. The corner and eastern façade, on the lower level, originally has small tilework facades which have been covered/replaced with paneling. The detailing of the paneling slightly reflects tilework on a larger scale.

The top step of the parapet is painted brickwork. The main parapet level is rendered and contains the lettering and window insets.

The entrance doors, now modern automatic sliding doors, are in the corner position of the original doors, highlighted by the positioning of two entrance columns. The curved parapet area conceals a mezzanine level with timber louvres. There is a suspended, curved awning over the footpath.

The Main Street elevation incorporates adjoining shops, one of which (no 15) has a step up into the shop from the street frontage. The windows in these shops appear to be original, with angled glass.

## Historical Context

The Proserpine district was first settled by European pastoralists in the 1870s. One property, Glen Isla, was set aside for a 3000-acre sugar plantation in 1882. Although land was cleared by Pacific Islander and Chinese labour, and machinery and a mill was ordered for crushing, the Crystal Brook Sugar Company Limited was not successful (due to the Pacific Island Labourers Act Amendment Act 1884, the depression and the poor seasons and sugar process). The land was subdivided under the auspices of the Crown Lands Act 1884 which provided for the resumption of larger pastoral runs and conversion to small selections. In the 1890s, part of the Glen Isla property was included in the Proserpine township.

Proserpine township and district developed quickly after the establishment of the Proserpine Central Sugar Mill in 1897. The mill, which was financed under the provisions of the Sugar Works Guarantee Act 1893, was located in the centre of town, with frontage on Main and Mill Streets. Cane was transported to the mill via a tramway and then transported to a wharf on the Proserpine River.

In 1910 George Gould, who also operated a hardware shop, purchased the grocery shop on the corner of Mill and Main Streets in Proserpine. Brothers Joe and Charles Faust Brothers, who also owned a butchery on Main Street, bought out Gould in 1916 and the site has remained in the family since this time, operating continuously as a store providing a variety of goods and services to the region.

The Fausts were among a number of local grocers who were well known for the credit they extended to farmers, particularly local Italian farmers. The family ran a number of businesses in Proserpine.

The exact history of early buildings on the site is unclear. Historic photographs, however, confirm there was a two story timber building on the corner of Mill and Main Streets during the 1920s. According to the Proserpine Historical Museum, a new building was constructed between 1958-1963 (see image below of the opening day). This modern building, with its curved parapet wall, supporting columns and tiled walls, made a substantial visual impact on the Main Street streetscape. The building incorporated offices and a butchery as well as grocery facilities. It later became an IGA supermarket and the back section (entrance from Mill Street) was used as a supermarket until July 2013 when the IGA relocated and the 'The Reject Shop' took over the premises. In October 2017, the front shops along Main Street were empty.

Originally, there were two original double timber framed entrance doors, with chrome kickboards, in the corner position, which were highlighted by the positioning of two entrance columns.

## Historical Significance

**Criteria A** - the place is important in demonstrating the evolution or pattern of the region's history

Located on the site of the original Faust's Store, the 1950s masonry store demonstrates the evolution and progress of retail premises in Proserpine's commercial precinct during the late 1950s.

**Criteria E** - the place is important because of its aesthetic significance

Faust's Store, with its 1950s curved and stepped parapet, decorative lettering and tiling, suspended awning and original shop front windows contributes to the overall aesthetics of Proserpine's Main Street commercial precinct.

**Criteria H** - the place has a special association with the life or work of a particular person, group or organisation of importance in the region's history

Faust's Store is significant for its special association with the Faust family who have made an ongoing contribution to the economic development of the region, particularly Proserpine.



Google Street View - September 2016



Google Street View - May 2010



Google Street View - January 2008



Image from 2014 Heritage Study



Opening of Faust's Shop after rebuild in 1963

